



Lovejoy® Products For The Pulp and Paper Industry

Lovejoy flexible couplings and power transmission products address critical operational issues that face today's pulp and paper producer. We provide solutions that are resistant to corrosion, require no lubrication, lower maintenance and downtime costs, and reduce noise levels – all with the quality, value, and customer service you expect from Lovejoy.



Disc Couplings

- No need for lubrication
- Inspection without disassembly
- Torsionally rigid without any backlash
- No wearing parts
- High resistance to harsh environments
- Bore range to 10.5 inches
- 3,309,000 in-lbs of maximum torque
- Meets API 610, 671 standards
- Standard and special styles such as close coupled, spacer, drop out and long shaft



Gear Couplings

- Standard and special styles
- Many variations: stainless steel, spacer, and floating shaft styles
- Torque carrying capability to 220,000 in-lbs
- Bore sizes from 7/16" to 5-3/8"



High Performance

- Made for extreme high speed applications, with reduced moment of inertia
- Maximum bores to 44"
- Torque capacity of 54,000,000 in-lbs

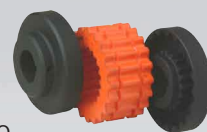
Jaw In-Shear Couplings

- Radially removable Urethane insert fits standard Lovejoy stainless steel, cast iron or aluminum hubs
- Fast and easy assembly
- No tools or moving of machinery needed to replace insert
- 6 pin locking ring made of 347 stainless steel
- 2° angular misalignment
- 50D shore urethane material maximum temperature of 200°F
- Rings and elements available from stock
- 16 standard sizes with bore sizes up to 9 inches



S-Flex Couplings

- Elastomer-in-shear design
- Torque capacity up to 72,480 in-lbs
- Maximum bore of 5-1/2"
- Three sleeve materials provide flexibility in adapting to application requirements
- Fully interchangeable with industry standards
- Wide selection of both inch and metric finished bores



Universal Joints

- Industrial U-joints designed for low to moderate speed and torque
- Maximum bore of 2"
- Many bores available such as round, hex, square and spline
- Suitable for angular misalignments up to 25°, modifiable to allow 45°



Common Applications

Paper Machines
Refiners
Blenders

Calenders
Dryers
Slitters

Pumps
Vacuums
Wind and Unwind Stands

Lovejoy, Inc.
World Headquarters
630-852-0500
info@lovejoy-inc.com

www.lovejoy-inc.com
ISO 9001-2000 Certified